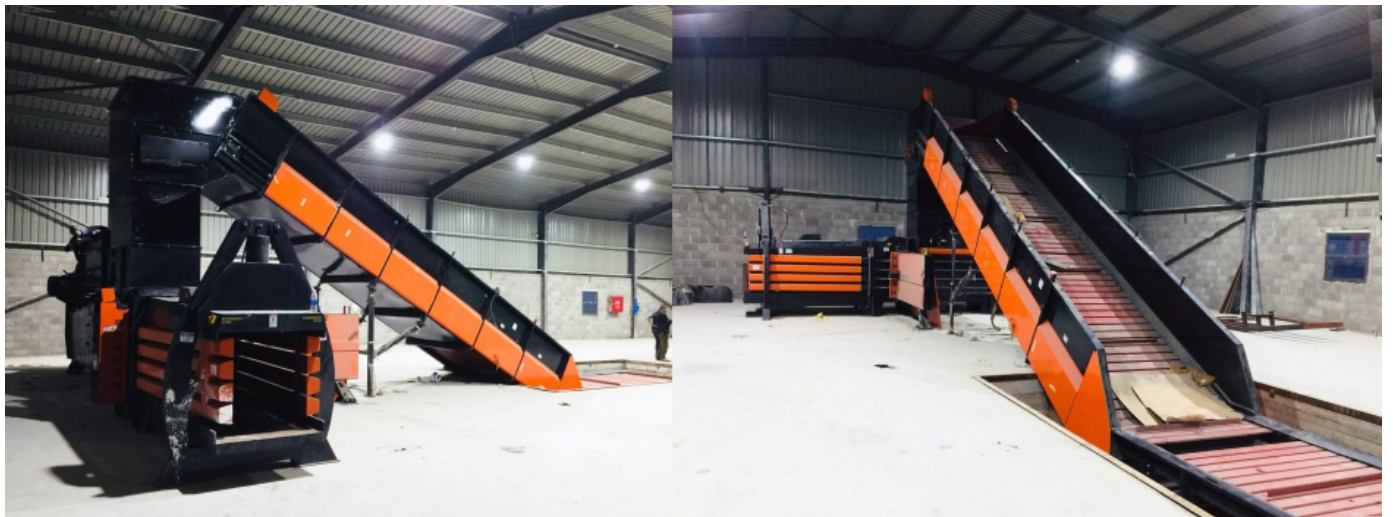




**ecopress**  
RECYCLING EQUIPMENT

# EHB S150 | AUTOMATIC BALER | MODEL

**ECOPRESS Pro** Auto tie Machine baler presses



**ECOPRESS Pro Auto tie Machine balers** has been developed in many areas for over 20 years. Wide model range of Ecopress PAM baler can suit and adopt efficiently to different capacity purposes. It depends on characteristics of the input material: density, composition, volume, size, moisture, etc. The production of the baler (tons per hour) considering different input densities is indicated in attached technical specification sheet. This data is only as a reference. For estimating the production the customer should take in to account that the baler needs some daily maintenance (cleaning) as indicated in the instruction manual and also feeding the machine properly.

## GENERAL OPERATION

Baling - there are two pairs of sensors placed in the hopper of the baler for controlling the feeding operation located at the bottom. When the sensors of the bottom are activated the baler starts the compaction cycle, when those sensors are not activated the baler is in stand-by waiting for more material. The cycle starts when the ram moves forward introducing (compacting) the material inside the chamber and going back to the initial position. For making a bale the machine needs various cycles, depending on the desired bale density.

**ECOPRESS Pro Auto tie Machine balers** conform to Health & Safety and CE requirements of EU Directives 2006/42/EC, 89/392EEC, 91/368EEC, 93/44EEC, 93/68EEC on the safety of machinery and equipment and German accident prevention regulations.



**ecopress**  
RECYCLING EQUIPMENT



## FEATURES

- Low Energy Consumption
- Automatic shut down the machine / sleeping mode if no materials are feeding. This time frame can be changeable from the operator interface touch screen
- Safe and easy usage
- Counter of number of bale made in a day and life of the baler also number of hours operation in life of the baler
- Long life Low Noise (60 dB)
- Bale table / Bale exit tray
- Two shaft pet perforator will be fitted in the top of hopper of the baler. If baler press the carton or plastic Pet- perforator comes out automatically from the hopper and if baler press PET , that time pet perforator moves inside the hopper to perforate the pet before falling in the baler hopper
- Reliable Constriction
- Availability of a set of quickly wearing parts during the warranty period and after production at least 10 years
- Touch Screen 7" PLC Control
- 3 set Hopper sensor to sense the level of the hopper feed
- Continuous Feed Baler
- Automatic Wire Tie
- Machine comes with bale counter and info feed to PLC how much bale has been created
- Live pressure shows on the PLC
- Colour coding system for different materials in the operation system
- Pre define pressure settings system for different materials
- Hour counter, overloading, emergency stop, door open warning system are available
- A set of maintenance tools will be provided for the machine
- Automation package in feed management system
- Body shear blade/adjustable cutting knives in replaceable
- Hopper view door
- Free-standing operator centre
- Automation switch-off when filling is not in process
- Compaction chamber floor Replaceable HARDOX 450 plates
- Push plate line and top of the push plate made with replicable HARDOX 450
- Machine automation troubleshoot is possible through laptop over internet
- Special electronic security device for inspection and access door. (Magnetic coded two way device)
- The loading hopper is equipped with service door
- Replacable moving and fixed knife
- Emergency shutdown of equipment when the level falls and the oil temperature rises



## TECHNICAL INFORMATION

General Performance	
Main Motor Power	1 x 37,5 kW (total 100HP) or 2 x 45 kW (total 120 HP)
Bale Size (width x height x length)	1100 mm x 1100 mm x changeable bale length
Press Force	145 tons
Ram Cycle Time (when the hopper empty)	14.4 sec
Cycle Per Minute	4
Oil Tank Capacity	2400 litre
Capacity	up to 21 ton/hour (depending on material volume weight)
Bale Weight	800-1500 kg (depending on material & bale length)
Tying cycle	15 sec

Machine Physically Specification	
Hopper Dimension	1850 mm x 1020 mm
Machine Length	14000 mm
Machine Width	5700 mm
Machine Height	>6000 mm
Weight	~24 ton

Electric Automation Features	
Main Voltage	400 Volt - 3 phase - 50 Hz
Machine Control Voltage	24 Volt DC
Programmable Control	PLC
Operator Interface	7"Color & Touch Screen Display
Electric Components	Schneider & Delta Electronics
Remote Control	Standard
SCADA Computer System	Optional

Hydraulic Features	
Powerpack System	High Flow Regenerative Logic System
Pumps	Total Two Kawasaki Variable Displacement Piston
Pump	
Pump Pressure	280 bar working Pressure, Pick 350 bar
Powerpack Montage Place	Back of The Baler
Oil Cooling System	Air Cooler
Filtration	60 Micron
Circulation Pump	170 litre/min
Working Temperature	45-65°C
Hydraulic Components	Eaton / Parker / DUPLOMATIC Valves
De Blocker / Stamper	Available inside the hopper



Feeding Conveyor	
Conveyor Type	Angle & Steel Chain Rubber belt Heavy Duty Using
Pullers	Heavy-Duty Chain
Belt Type	Special Bended Rubber
Conveyor Width	1700 mm (inside & wall to wall)
Conveyor incline Length	~8230 mm
Conveyor Horizontal length	~5000 mm
Conveyor Angle	~31° degree
Gear Box Power	Helical Bewel Gear Box
Motor Power	5.5 kw
Overload Automatic Stop	✓
Emergency Stop	✓
Gear Box Area	Torque Embranchment with Vulkollan
Chain Security	Cover On The Chain
Security	Safety emergency System with Longitudinally Still Rope & Switches

